

E-Series DVR Manual




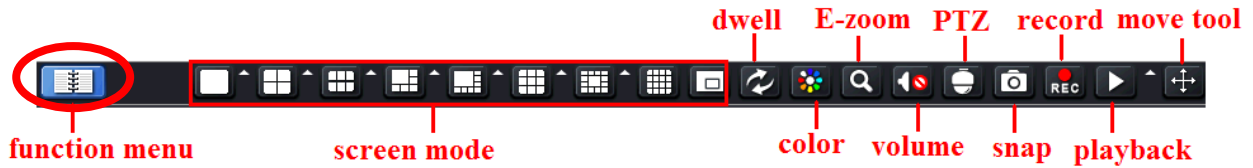
2/6/2013

Table of Contents

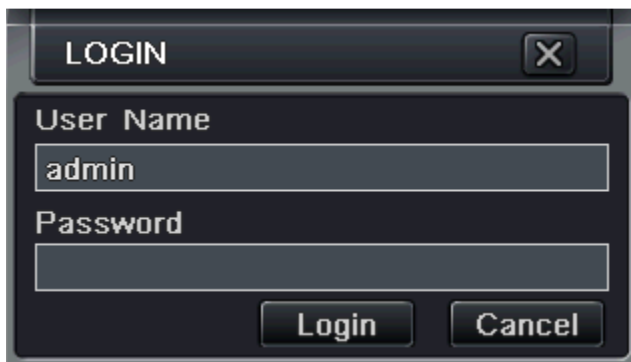
Video Playback	3
Video Backup	5
Setup Video to Record Motion	7
System Configuration.....	9
Changing Camera Display Settings.....	11
Connecting the DVR to a Network.....	14
Setting Up a PTZ Camera.....	16
Setup User Rights.....	18

Video Playback

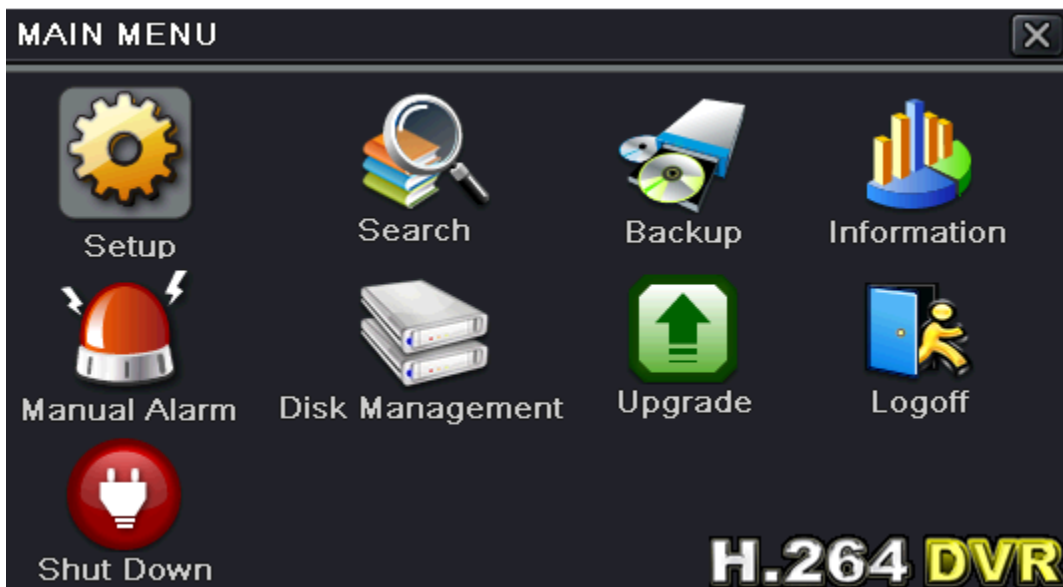
1.) Click on the function menu button () at the bottom left of the screen.



2.) Enter the user name and password when prompted.
a. User name is admin and password is 123456.

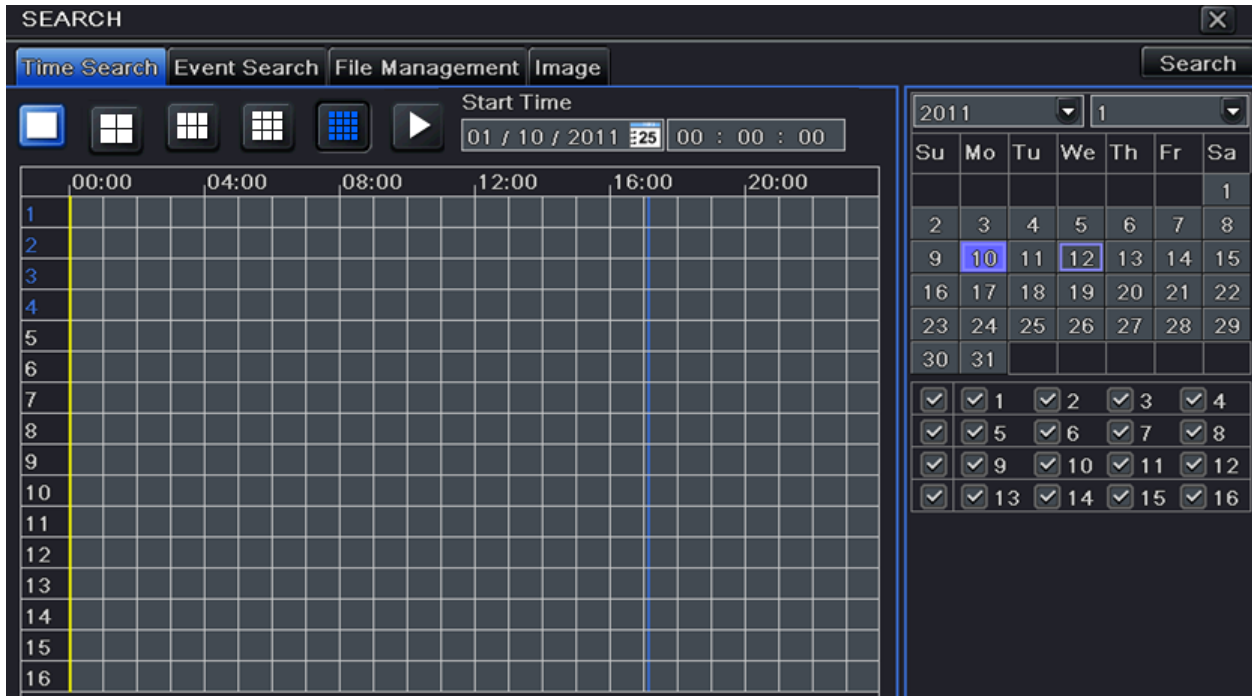


3.) Click on Search



Video Playback - Continued

4.) Click on Time Search.



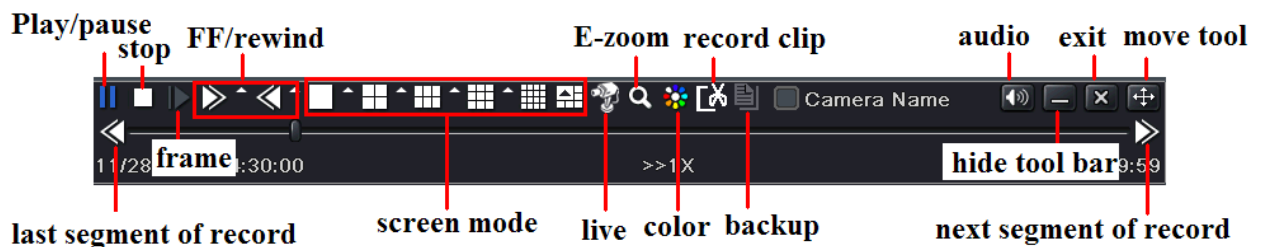
5.) Select the Date to the right.

6.) Select the channels (cameras) you want to view.

7.) Click the search button in the upper right corner.

8.) Set the start time by clicking on the corresponding grid with the time.


9.) Click the play button at the top.

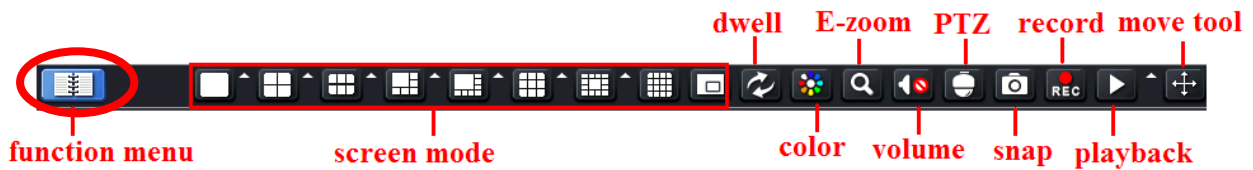


10.) Use the controls at the bottom of the screen to control the video playback.

Video Backup

The only way to backup video file is to a usb flash drive. This system cannot back up to a DVD.

- 1.) Click the Function Menu Button ().
- 2.) Click the Menu Button.



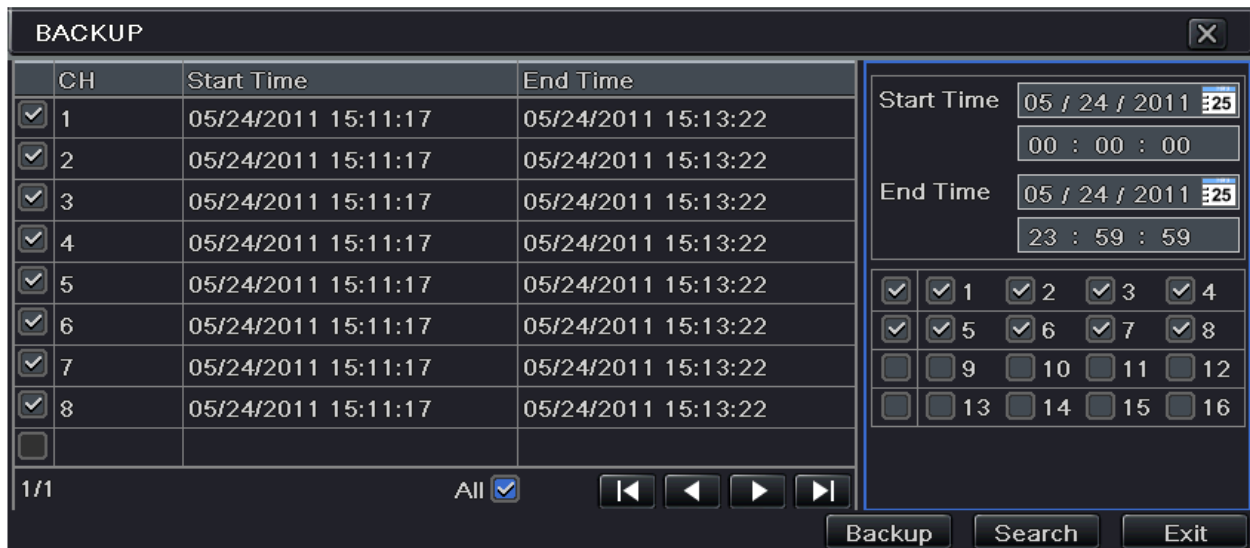
- 3.) Enter the user name and password
 - a. User Name is admin and password is 123456



- 4.) Click the backup button.




Video Backup - Continued

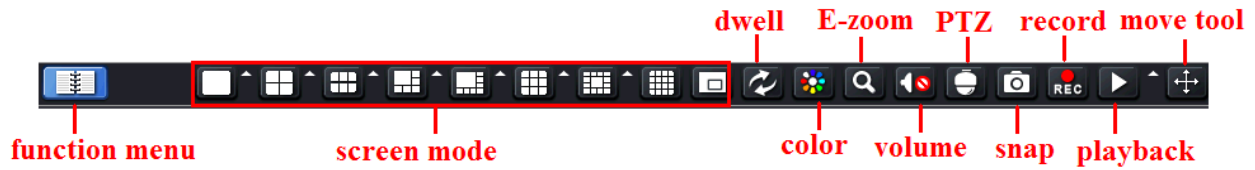


- 5.) Set the start time and the end time.
- 6.) Select the channels (Camera numbers).
- 7.) Click the search button.
 - a. All the files will show up based on the search criteria.
- 8.) Select the files required to put onto the flash drive or put a check mark in the all box.
- 9.) Click the backup button to display all the backup information you selected.
- 10.) In the backup information tab, you can select the relevant options for backing up the files.
 - a. These options include the storage media (flash drive), backup player, and save file type.
- 11.) Click the start button to start the backup.

****Note: If the backup files are saved in DVR format, please check the backup player. Only this player can play these files in DVR format. If the backup files are saved in AVI format, you can play these files with any common media player****

Setup Video to Record Motion

1.) Click the Function Menu Button ().



2.) Enter the User Name and password.

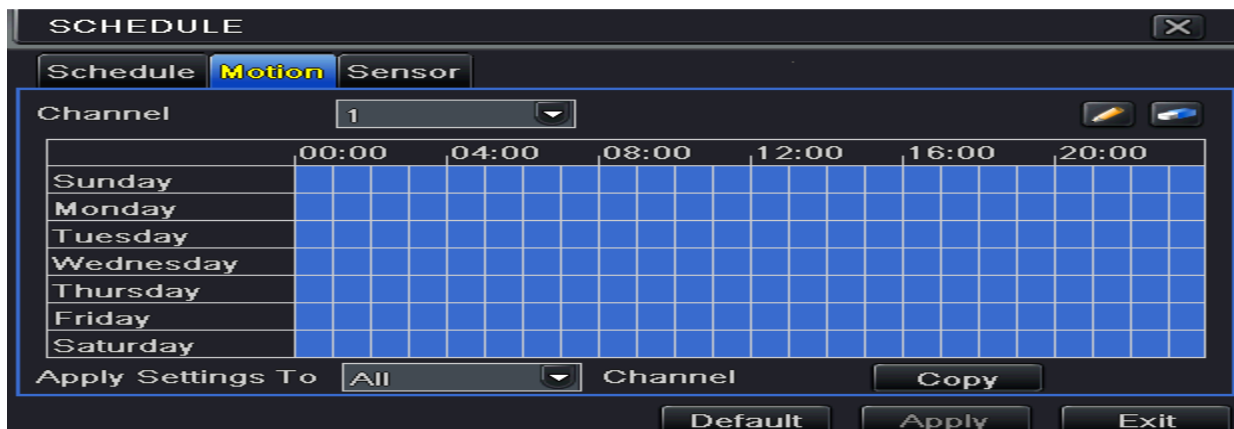
a. Default user name is admin and password is 123456.

3.) Select Setup



4.) Click on Schedule.

5.) Click on Motion Tab.




Setup Video to Record Motion - Continued

- 6.) Select the channel (camera) to setup.
 - a. You only need to select one. We will copy all settings later in this setup.
- 7.) Click the upper right corner and drag to the lower left corner to setup only to record by motion.
- 8.) When you have the times selected press the copy button at the bottom to copy to all cameras.



System Configuration

- 1.) Click on Function Menu button ().
- 2.) Click Setup.



- 3.) Click on System Tab at the top left of the screen.

****See next page for System screen explanations****



System Configuration – Continued

Device Name: The name of the device as it may display on the client end or CMS, this would help to recognize device remotely.

Device ID: Do Not Change

Video Format: Always set to NTSC.

Password Check: If this option is enabled, you would need to input the user name and password for performing corresponding operations.

Show Time: If selected, the current time will be displayed during live monitoring.

Show wizard: Do Not Change.

VGA Resolution: The resolution of the live display interface, range from: VGA 800*600, VGA 1024*768, VGA 1280*1024 and CVBS. Switching between VGA and CVBS will change the menu output mode. Please connect the relevant monitor.


Logout After (Minutes): You can setup the screen to logout after a certain amount of time (30s, 60s, 180s, & 300s). When the time passes the system will auto log you out and you will need to log back in again.

No Image When Logout: If this item is selected, there will be no image showing when the system is logged out.

4.) Click Apply when changes are made to save the changes.



Changing Camera Display Settings

- 1.) Click on Function Menu button ().
- 2.) Click Setup button.



- 3.) Click the Live Tab.



Camera Name: Change the name of the camera.

Show Name: This chooses whether to the display the camera name on the main screen.

Color: Change the color settings on each camera.

Changing Camera Display Settings - Continued

4.) Click on the Main Monitor Tab at the top of the screen.

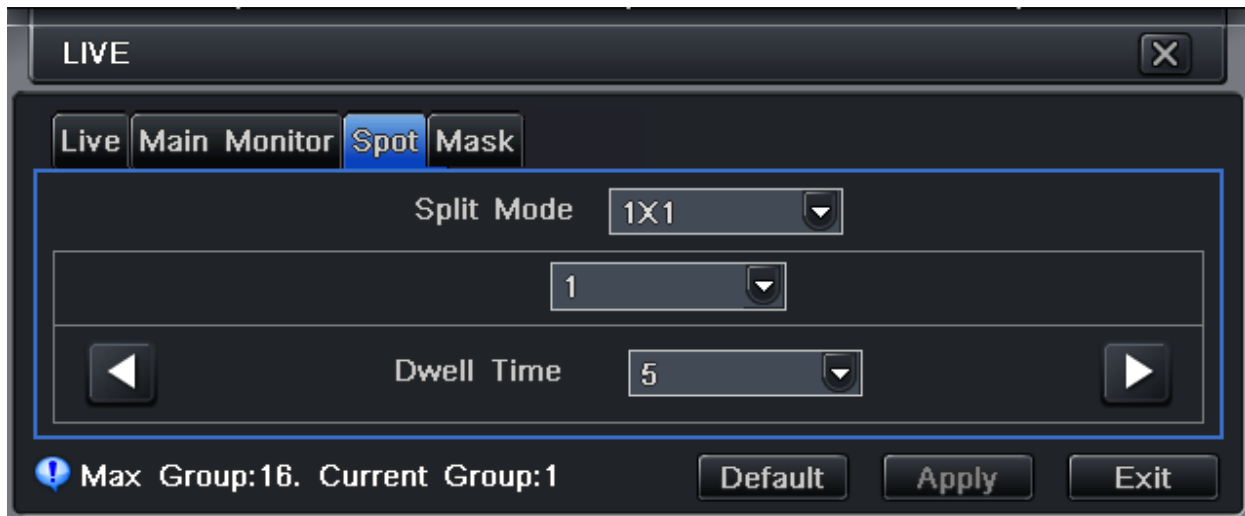


Split Mode: Sets the Main screen display mode (1x1, 2x2, 3x3, 4x4). The boxes below allow you to change which cameras appear in which box or part of the main screen.

Dwell Time: Sets the time to change between the cameras on the main screen. This will cause the cameras to cycle through each camera in each box.

5.) Click the apply button to save the changes.

6.) Click on the spot tab at the top.



****This is used to setup the display for a secondary monitor****

Changing Camera Display Settings - Continued

Split Mode: This sets up the display for the secondary monitor. The box below the split mode will set the Group. You can setup multiple groups to display on the screen.

Dwell Time: Sets the amount of time each camera will display before it changes to the next camera in the sequence.

- 7.) Click the Apply button when finished.
- 8.) Click on the mask tab.




****This is used to setup an area on each camera to hide or not show a certain part of the camera picture. So, this will block out a part of the screen that you do not wish to have seen on the camera****

- 9.) Click on the Setting button.
- 10.) Draw an outline of the area you do not want displayed.

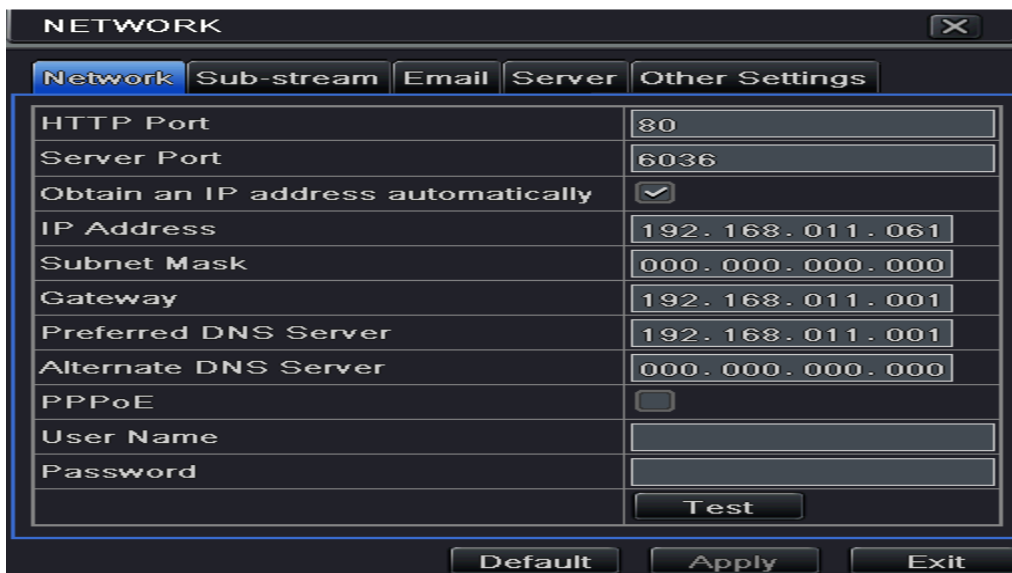


Connecting the DVR to a Network

- 1.) Obtain LAN IP Address for DVR.
 - a. Go to the command prompt on a Windows computer and type in Ping then the LAN IP address. It should have total packet loss unless the IP Address is in use by something else.
- 2.) Open ports on the LAN Switch.
 - a. Have ports 80 and 6036 open to the DVR IP Address using both TCP and UDP settings.
 - b. If port 80 is used or cannot be used then select a different port. For example port 85.
- 3.) On the DVR, click on the Function Menu button ().
- 4.) Click the Setup Button.



- 5.) Click on the network tab.




Connecting the DVR to a Network – Continued

- 6.) Change the HTTP and Server port to the ports that were opened in Step 2.
- 7.) Change the IP Address to the IP Address from step 1.
- 8.) Change the Subnet Mask to the Gateway's subnet mask.
 - a. Usually is 255.255.255.0
- 9.) Change the Gateway address to the router's gateway address.
 - a. This is the address you type in the access the router through a web browser.
- 10.) Click Apply

****If you need help with connecting the DVR to a network. Please contact Watcher Support at 877-289-2824 option 1 for technical support****

Setting Up a PTZ Camera

- 1.) Click on the Function Menu button. ().
- 2.) Click the Setup Button.



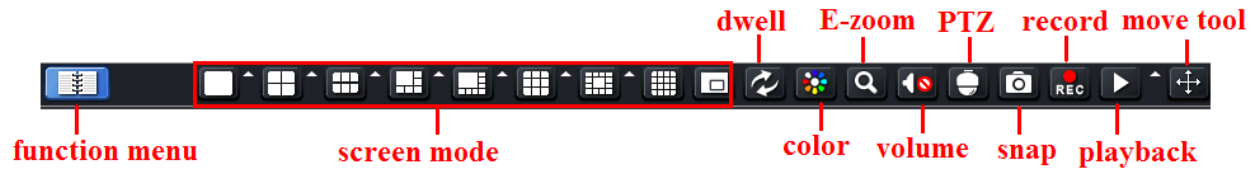
- 3.) Click the P.T.Z Button
- 4.) Click on the Serial Port tab at the top.



- 5.) Choose the channel/camera number the P.T.Z. is connected too.
- 6.) Make the enabled box is checked.
- 7.) Set the Address to the Address of the P.T.Z. Camera.
 - a. Most of all of the P.T.Z. cameras ship with address setting 1.
- 8.) Set the Baud Rate to 2400

Setting Up a PTZ Camera - Continued


- 9.) Set the protocol to PELCOP.
- 10.) Click the Apply button.
- 11.) Click the Exit button.
- 12.) Right click on the main screen.
- 13.) Choose the P.T.Z. camera option.

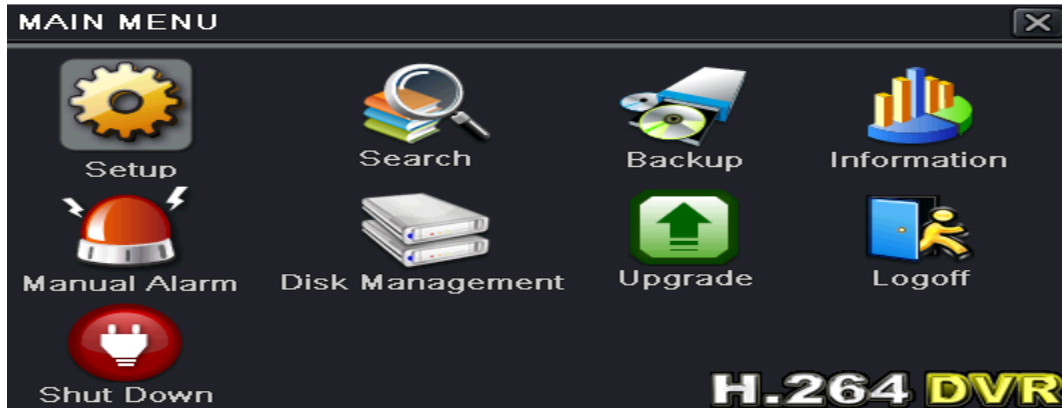


- 14.) A P.T.Z. control box will pop. If the settings are correct you should now be able to control the P.T.Z. camera.

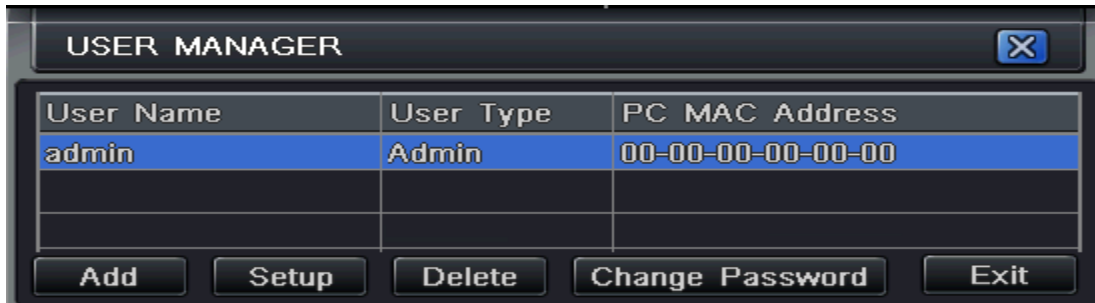
****If you need help with connecting the DVR to a network. Please contact Watcher Support at 877-289-2824 option 1 for technical support****

Setup User Rights

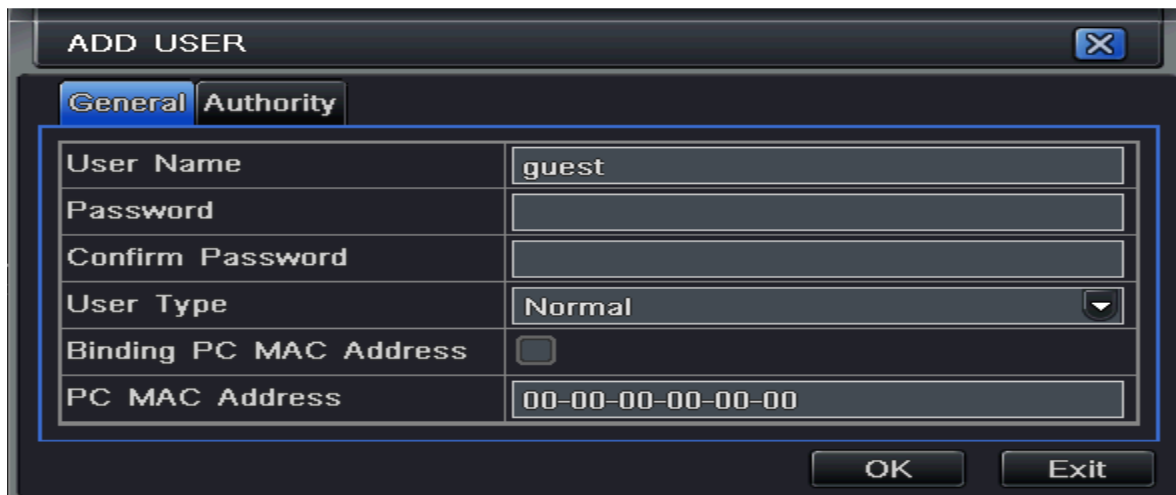
- 1.) Click the Function Menu Button ().
- 2.) Click the Setup Button.



- 3.) Click the User Management Configuration Button.
- 4.) Click Add button to add a user.

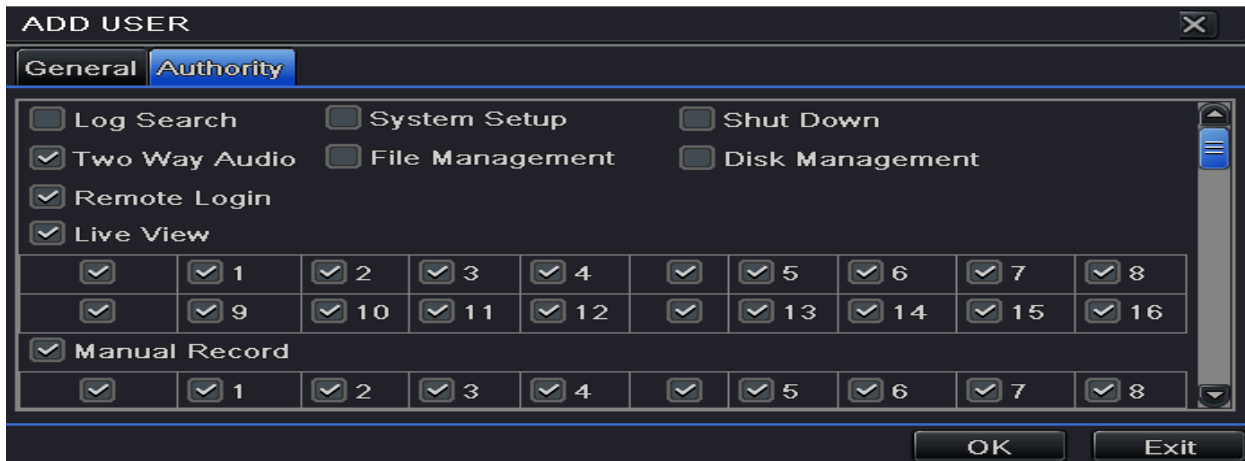


- 5.) In the General Tab, input username, password and select the user type.



Setup User Rights – Continued

6.) Click the Authority Tab at the top of the screen.

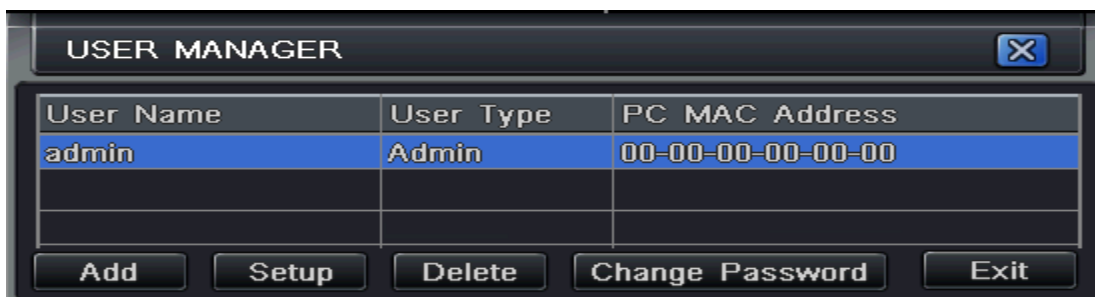


7.) Select the authority for the user.

- a. This will control the access of the user.
- b. Also you can choose which cameras they can view and also which cameras they can choose to manually record.
- c. Put a check in the box of the cameras they can view.

8.) To delete a user

- a. Go back to the User Manager Screen



- b. Select the name you want to delete and click delete.

9.) To Change a Password

- a. Go back to User Manager screen
- b. Select the name you want to change the password
- c. Click the button Change Password.

**It is recommended that you setup an admin user name and password because if the passwords are forgotten the system needs to be sent back to use and may take a couple of weeks to ship the system back*