



E2-Series DVR Manual




Table of Contents

Function Menu Access.....	3
Video Playback.....	4
Video Backup	5
Setup Motion Recording	6
System Configuration	6
Camera Display Settings	8
Connecting the DVR to a Network	10
Setting Up a PTZ Camera	11
Setup User Rights.....	12



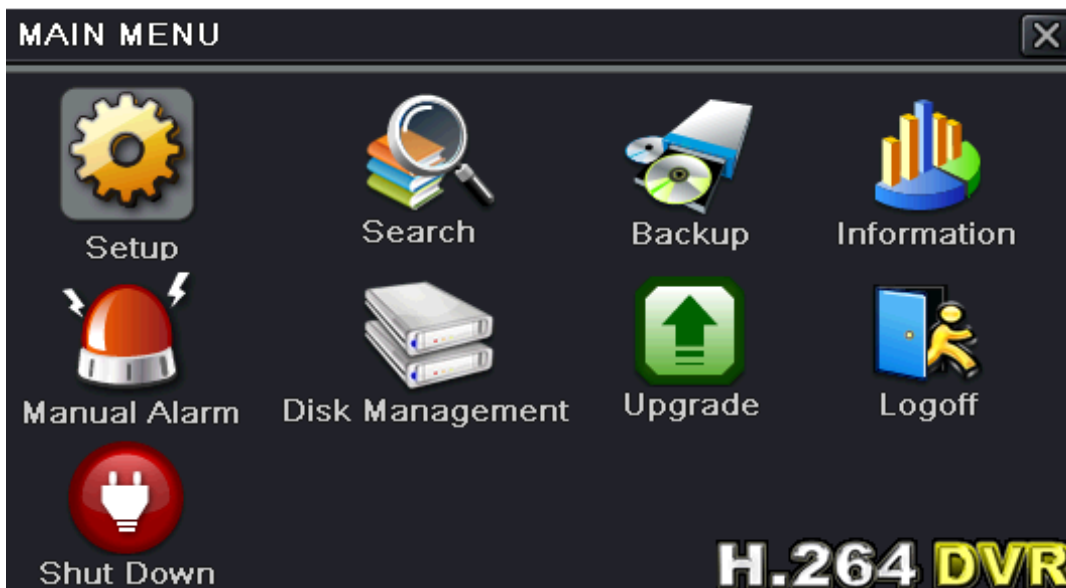
Function Menu Access

This guide will refer to the Function Menu to access various setup configurations. To access the Function Menu, right-click on the main camera screen to bring up the control bar at the bottom. From here, the Function Menu is accessed from the icon on the bottom left side of the control bar. 

You will then be asked to input the username and password. The default username is *admin* and the default password is *123456*.



You will then be at the main Function Menu screen.

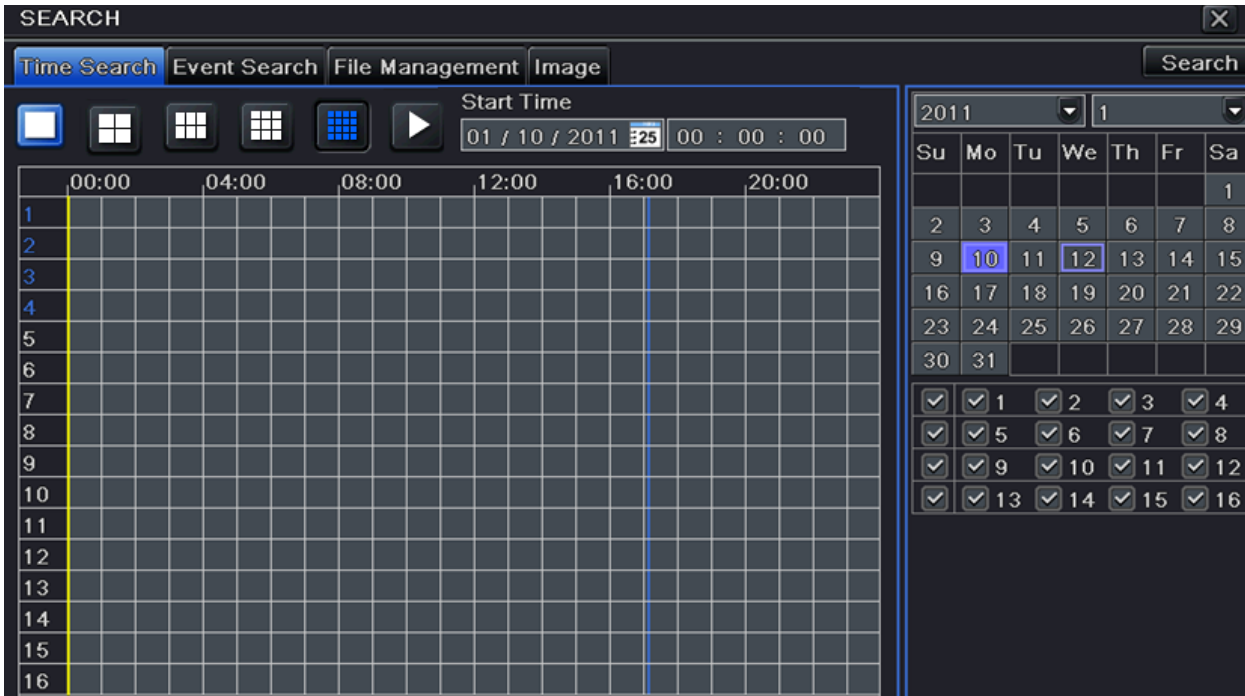


From here, there will be various options that will be used in this guide for video search, video backup, shutdown, etc.



Video Playback

Access the Function Menu and click on the Search icon then click on Time Search.



Select the Date on the right. Then select the camera number(s) that you want to view. Click the Search button in the upper-right corner. This will bring up a timeline for the day specified along with each camera and the recordings. Click on the time (in the grid) that you would like to view and click the Play button at the top. Use the playback controls at the bottom.



Video Backup

****Video backup can only be performed on a USB Flash drive. It will not backup to portable USB DVD drive.****

Access the Function Menu and click on the Backup icon.

On the right-hand side, set the Start and End date and time. Check the camera numbers below the date/time settings you wish to backup. Click the Search button. The files that are found for the search criteria will be displayed on the list. You can check the files individually or check the All box at the bottom. Then click the Backup button.



Then, from the backup information tab, you can check some options that may be relevant for you. The storage media should be USB drive. Player backup can be checked to allow the video to be played on a Windows PC. Save file type allows the backup file format to be changed to AVI so that these files can be played from a common media player.

****Note: If the backup files are saved in DVR format, please check the backup player. Only this player can play these files in DVR format. If the backup files are saved in AVI format, you can play these files with any common media player****



Setup Motion Recording

Access the Function Menu and click the Setup icon. Click on Schedule then the Motion Tab.



If you would like to setup motion on every camera, select 1, from the drop-down menu next to channel. You will then copy the channel settings to the other channels once the schedule is set. Hold the left mouse button down in the upper-left corner of the grid and drag to the lower-right corner. This will set a 24 hour, 7 days a week schedule for motion recording. Then, at the bottom, click the Copy button to apply the settings to the remaining channels.

System Configuration

Enter the Function Menu and click the Setup icon. Click the System Tab in the top left of the screen.



Device Name: The name of the device as it will appear on the client end or CMS, this would help to recognize the device remotely.

Device ID: Do Not Change

Video Format: Always set to NTSC.

Password Check: If this option is enabled, you would need to input the user name and password for any operation.

Show Time: If selected, the current time will be displayed during live monitoring.

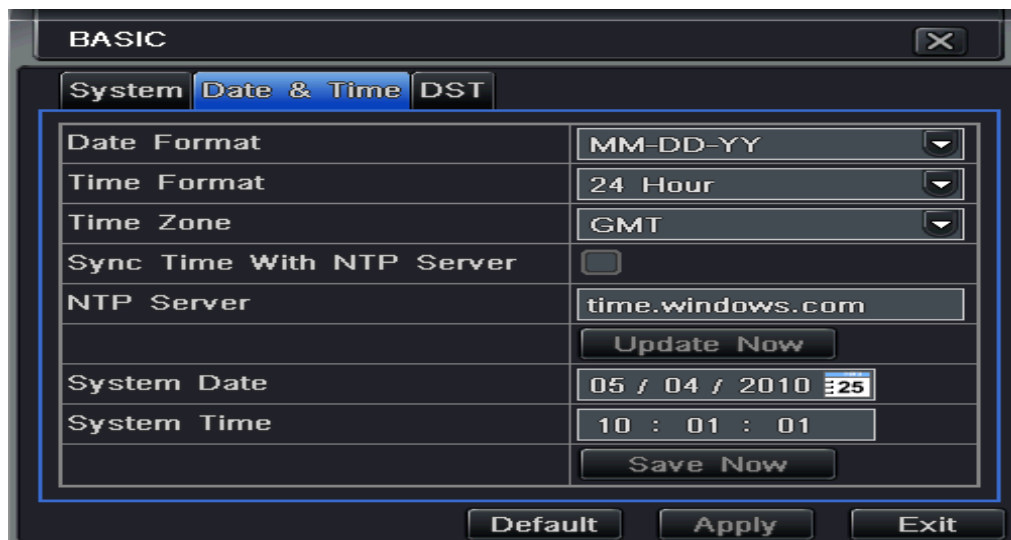
Show wizard: Do Not Change.

VGA Resolution: The resolution of the live display interface, range from: VGA 800*600, VGA 1024*768, VGA 1280*1024 and CVBS. Switching between VGA and CVBS will change the menu output mode. Please connect the relevant monitor.

Logout After (Minutes): You can setup the screen to logout after a certain amount of time (30s, 60s, 180s, & 300s). When the time passes the system will auto log you out and you will need to log back in again.

No Image When Logout: If this item is selected, there will be no image showing when the system is logged out.

Click the Apply button to save your changes.



Camera Display Settings

Access the Function Menu and click the Setup icon. Then click the Live tab.



Camera Name: Change the name of the camera.

Show Name: This chooses whether to display the camera name on the main screen.

Color: Change the color settings on each camera.

Click the Apply button to save your changes.

To change the layout of the cameras, click on the Main Monitor tab.



Split Mode: Sets the Main screen display mode (1x1, 2x2, 3x3, 4x4). The boxes below allow you to change which cameras appear in which window of the main screen.

Dwell Time: Sets the time to change between the cameras on the main screen. This will cause the cameras to cycle through each camera in each window.

Click the Apply button to save your changes.

If you have a secondary monitor connected to the “spot” port of the DVR, you can change the layout of that by using the Spot tab. The setup is exactly like Main Monitor options. Other monitors will only display a copied image of the Main Monitor.



Split Mode: This sets up the display for the secondary monitor. The box below the split mode will set the Group. You can setup multiple groups to display on the screen.

Dwell Time: Sets the amount of time each camera will display before it changes to the next camera in the sequence.

Click the Apply button to save your changes.

You can also mask out portions of a camera picture with the Mask tab.





Click the Setting button that corresponds to the camera you would like to add a mask. Then, draw an outline of the area that you would like not to be seen. Here is an example of how masking works.



Connecting the DVR to a Network

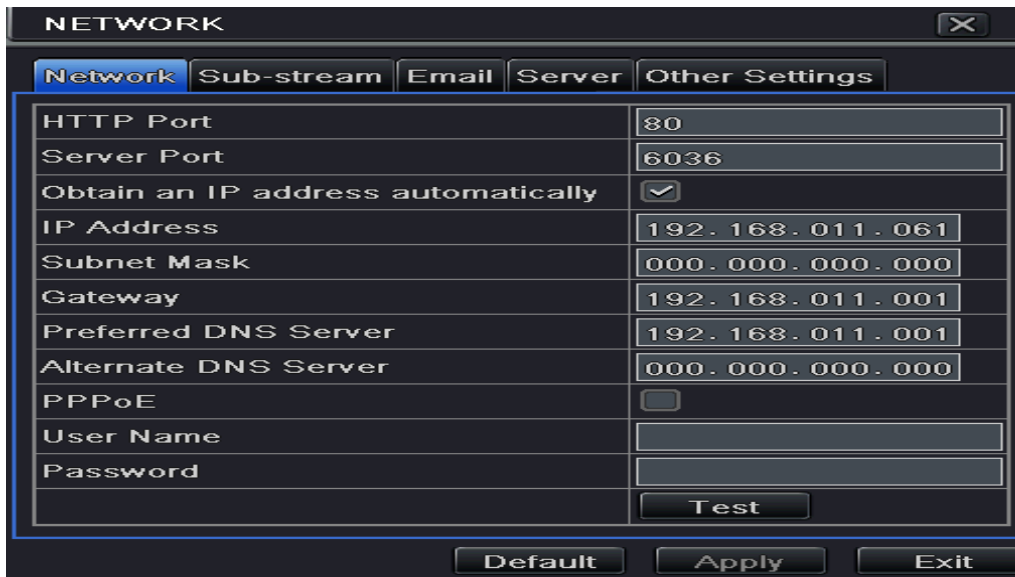
To connect the DVR to a network, the IP address scheme should be known as well as an available IP address for the scheme. If you have a PC connected to the network that the DVR will be on, you can go to the command prompt in Windows. (Start Menu, type *cmd* in the search bar, then hit the Enter key). Once in the command prompt, type *ping* followed by the IP address that you would like to check. (ex. *Ping 192.168.1.25*). If you get a request time out, then the IP address is open and you can use it. If you get a response, then the IP address is already being used.

You will also want to forward ports in your firewall to allow for remote access. Please consult your IT department/team or contact Watcher Technical Support for assistance. If you do have an IT administrator that can perform the port forwarding, see the information below regarding the port forward settings.

****Ports: 80 and 6036 on both UDP and TCP (If port 80 is not available, you can pick another port. Just make sure that it is changed in the DVR.)**

To access the network settings in the DVR, access the Function Menu and click on the Setup icon. Then click the Network tab.





HTTP Port: Port for remote access (if 80 cannot be used, change to the port setup in the firewall)

Server Port: Port for remote access

Obtain IP address automatically: Recommended to leave unchecked and set the IP address to a static one.

IP Address: The IP address of the DVR. Set this to any open IP address on the network.

Subnet Mask: Same subnet mask as the network.

Gateway: Same gateway as the network.

Setting Up a PTZ Camera

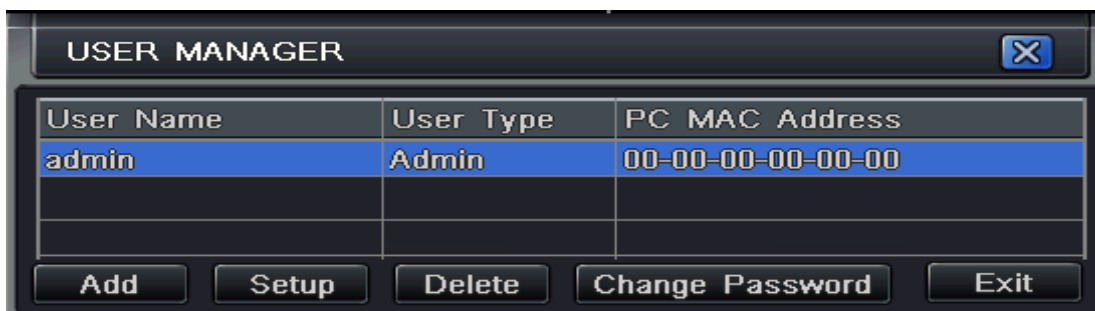
Access the Function Menu and click the P.T.Z. icon. Then click on the Serial Port tab.



Chose the channel that the PTZ camera is connected to and make sure the Enable check box is checked. Set the address of the PTZ camera (usually defaults to 1). Set the Baud Rate to 2400. Set the Protocol to PelcoP. Click the Apply button to save the changes and then Exit. Right-click on the main screen and select P.T.Z camera option. This will bring up a PTZ control window and you should be able to control the camera (as long as all of the wiring is correct.).

Setup User Rights

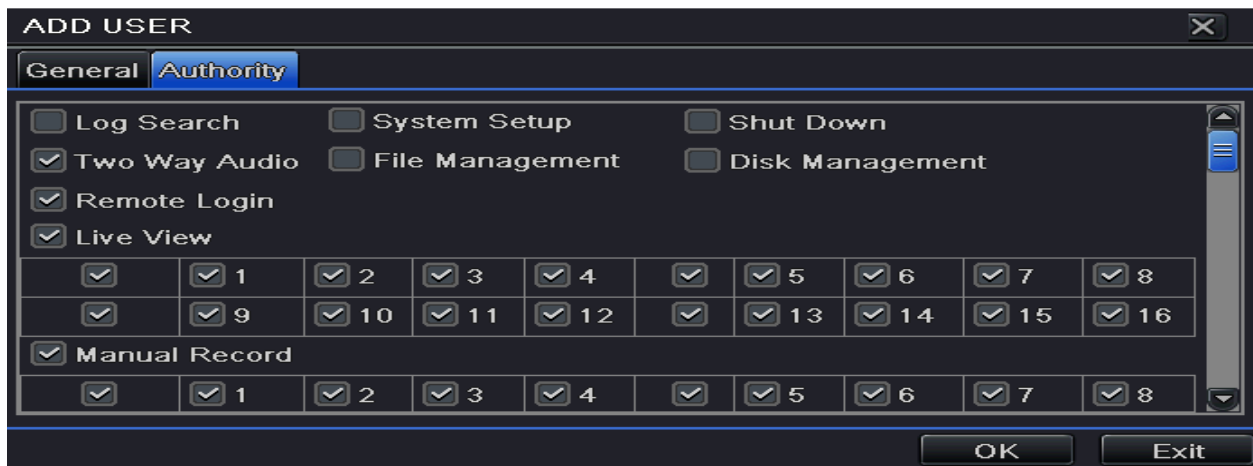
Access the Function Menu then click the Setup button. Then click on the User Management Configuration icon.



Then click the Add button. In the General tab, input the username, password, and user type. You can also delete users and change passwords for users from this User Management interface.



Then, in the Authority tab, you can select/deselect different functions that the user can access.



Remember, it is very important to remember the administrator username/password as the DVR will have to be shipped back to us for a password reset, which could take up to 7 business days.

